

CLUB NEWS



Fred Clarke

October 2 Monthly SAOS Meeting

by Sue Bottom,
sbottom15@bellsouth.net

Welcome and Thanks.

President Jeannette Pacetti opened the meeting at 7:15 pm with 63 people present including many guests and 5 new members Julie Faircloth, Judy Cornett, Madalan Marine, Jane Altenhofen and Persia Turim. She thanked Jeanette Smith and Barbara

Conrad for the refreshments and reminded those present to "Drop a Dollar" to help pay for the refreshments. Gail Marshall reminded those whose birthdays are in October to pick up their birthday ticket from Christie. Jeannette reminded everyone to vote for their favorite on the show table, dropping your choice in the silver box and that Dick would announce the winner at the break between the program and the raffle. Librarian Penny Halyburton showed us a few books from the Library including the Scent of Orchids donated to the library by Daisy Thompson. Penny suggested that members go to the website and order what they'd like for next month and asked members who have books out to please return them at the next meeting.

SAOS Club Business. The nominating committee of chair Penny Halyburton, Gail Marshall and Vivienne Rowe was announced. They will make recommendations at the next meeting for 2013 officers and directors. The Keiki Club is on hiatus until February. We always have potting supplies and fertilizer for sale at meetings. SAOS will be at Hagan Ace on US 1 South on Saturday October 6 from 9 am to 1 pm. If you have questions or need help with a plant, please come by and see us! Jack Higgins is filling up the hours for the GardenFest at the Ag. Center on October 6 to 7. He still need a couple people to fill in. Please call him if you can help! It's indoors this time, and free to all who want to attend. There will be lots of booths to check out!



Orchid Events. Orchid events are all listed on the website. The Gainesville Show is October 13 and 14. We had intended to put in an exhibit but do to scheduling conflicts, we have to cancel this year

Program.

The program this month was Australian Dendrobiums by Fred Clarke of Sunset Valley Orchids. Fred has given us several lectures and always is welcomed for his knowledge and humor! Fred has been taking



many trips to Australia to participate in the shows and give lectures and has developed a great interest in breeding these beauties.

The Australian orchids have many endearing qualities. They are one of the few orchids that rebloom off of old canes, and can do this for 6 or 7 years. It is not unusual to have 2 or 3 bloom spikes from each cane. The canes grow tightly together in smallish pots. As a result, you can get very floriferous specimen plants in a relatively short period of time.

Den. speciosum has flat to slightly cupped flowers that range in color from white, cream, yellow to deep gold on long racemes. The var. *speciosum* 'Windmere' FCC/AOS is the gold standard prized by hybridizers and hobbyists.



Continued on page 3



CLUB NEWS



Upcoming Orchid Events

October

- 5 – 7 South Florida Orchid Society Show
Bank United Center
University of Miami, Coral Gables
- 6 SAOS at Ace Hardware, 9 am til 1 pm
3050 US 1 S in St. Augustine
Repotting and Plant Clinic
- 6 - 7 Home and Garden Show
Agricultural Center, St. Augustine
- 9 JOS Meeting, Topic TBA, 7 pm
Fred Clarke, Sunset Valley Orchids
- 13-14 Gainesville Orchid Society Show
Kanapaha Botanical Gardens
- 13-14 Fort Pierce Orchid Society Show
Fort Pierce Shrine Club
- 19-21 Orchttoberfest at EFG Orchids
4265 Marsh Road, Deland
- 26-28 Delray Beach Orchid Society Show
Old School Square
- 27-28 Brevard County Orchid Society Show
Melbourne Auditorium

November

- 3 SAOS at Ace Hardware, 9 am til 1 pm
3050 US 1 S in St. Augustine
Repotting and Plant Clinic
- 4 Orchids by Del Rei Open House
4270 Cedar Ford Blvd.
- 6 SAOS Meeting, 7 pm
Movie and Popcorn Night: The Judge,
the Hunter, the Thief and the Black Orchid
- 13 JOS Meeting, Topic TBA, 7 pm
Dr. Courtney Hackney

December

- 2 JOS Christmas Auction, 5:30 pm
Orange Park Country Club
2525 Country Club Blvd, Orange Park
- 8 SAOS Christmas Auction, 7 pm
Moultrie Trails Clubhouse
121 Crooked Tree Trail, St. Aug 32086

January

- 3 **SAOS Meeting, 7 pm**
Date Changed to First Thursday
Courtney Hackney, Josh Jones and
Sue Bottom
Panel Discussion – Growing Orchids
- 5-6 Sarasota Orchid Society Show
Sarasota Municipal Auditorium
- 8 JOS Meeting, Topic TBA, 7 pm
John Stubbings, Clown Alley Orchids
- 18-20 Fort Lauderdale Orchid Society Show
War Memorial Auditorium
- 26-27 Manatee River Orchid Society Show
Manatee Convention & Civic Center
- 26-27 Tamiami International Orchid Festival
Dade County Fair Expo Center

St. Augustine Orchid Society Organization

President	Jeannette Pacetti jdp187@aol.com
First Vice President Program Chair	Sue Bottom sbottom15@bellsouth.net
Second Vice President Publicity Chair	Vivienne Rowe tomvivrowe@comcast.net
Secretary Orchid Digest Rep	Lola Stark seacuter@bellsouth.net
Treasurer	Bill Gourley wgourley@bellsouth.net
Directors at Large	Penny Halyburton phalyburton@comcast.net Jack Higgins jacktravel2003@yahoo.com Joshua Jones jajones@comcast.net
Exhibit Committee Chair	Harry McElroy cymbidiuman@msn.com
Librarian	Penny Halyburton phalyburton@comcast.net
Membership Committee Chair	Gail Marshall gamarshall1@bellsouth.net
Newsletter Editors Webmasters	Sue and Terry Bottom sbottom15@bellsouth.net bottomt@bellsouth.net
Operations Committee Chair	Jeanette Smith jesmith@watsonrealtycorp.com



CLUB NEWS

Continued from page 1

Den. tetragonum has long slender pseudobulbs that are in the shape of a tetragon at the base. The flowers have a spidery shape that are yellow with red markings. This species is often used by hybridizers to impart red coloration and a spidery flower shape producing very showy orchids.

Den. kingianum has slender pseudobulbs and flowers that are pink to mauve, cream to white and dark purple. The lateral sepals are 'chunky' as the Aussie's say. Hybridizers use kingianum to increase segment size and impart a wide variety of colors to their progeny.



Den. biggibum is another very showy species in the phalaenthe section of dendrobiums. There can be 1 to 4 racemes per cane each with 2 to 8 flowers that bloom in the full range of colors and last for 2 months. They tend to be hot growing plants and are widely used in hybridizing.

There are two other species lesser used in hybridizing. *Den. falcorostrum* has white flowers with a heart shaped lip. It grows at high elevations where temperatures regularly drop below freezing. *Den. fleckeri* is a rarish plant that grows in small clumps. Its blooms are butterscotch orange to apricot yellow to light yellos.

Fred proceeded to show us many photographs of beautiful hybrids showing how each of the species imparts certain qualities to its progeny. Needless to say, there were no dendrobiums left on the sales table after seeing pictures of these beautiful plants.

Fred provided a tutorial on cultural practices for these dendrobiums. During the heat and long days of summer, water and fertilize regularly to make sure your plants get the sustenance they need to bloom to their maximum potential. In the winter, let the plants dry out a little between watering. Basically, watering practices are very similar to that for cattleyas. The frequency of watering will depend on many factors related to the water holding capacity of your media, the type and size of container and your time availability.

Fred recommends that you fertilize each time you water and flush the plants monthly. In the summer you might use 1 tsp/gal and drop to 1/2 tsp/gal in the winter. If you

have an alkaline water source, you might use a 15-15-15 or 20-20-20 fertilizer to generate acidity and if you have a pure water source like rainwater you might use a 15-5-15 Cal Mag fertilizer.

The light requirements for these dendrobiums is very similar to that of cattleyas, 2500 to 4000 ft candles. This translates to 65-75% shade in summer and 55-65% shade in winter.

For potting, Fred uses Pinus radiata bark mixed at a 3:1 ratio with perlite. He considers it to be the best all around media because it contains organic material, is water absorbent, is inexpensive and buffers pH. He repots as new growth and roots are visible. You should select smallish pots that will accommodate no more than 3 years of new growth.



Fred treats all his plants as if they were virused to prevent the inadvertent spread of virus in his collection. This means he uses a newspaper underlayment for each potting event. He dons a new set of latex gloves for each plant. Only sterile cutting tools are used. He uses a butane torch and sterilizes each side of the cutting surface for 5 to 10 seconds. Potting sticks are taboo. After the plant is repotted, he wraps up all the debris, old mix, discarded plant parts, etc. in the newspaper and discards it, so there is fresh newspaper as the working surface for the next plant. He then gave a pictorial description on how to repot dendrobiums. The program was thoroughly enjoyed by all.

Meeting Conclusion. Following our break, Dick Roth announced that *Angcm. distichum* grown by Helen Hoffman was voted the best on the Show Table. Our raffle and silent auction followed, led by Fred Keefer, Christie Peppard and Gail Marshall.

Thanks to Watson Realty and Jeanette Smith for the use of their meeting space at 3505 US 1 South



CLUB NEWS

Keiki Club to Resume Meeting Next Year

With the advent of cooler weather, we're preparing our orchids for their winter rest. We'll resume Keiki Club meetings in February of the new year when our interest and attention turns to orchids. We'll be repotting overgrown orchids, mounting orchids on sticks and slabs and talking about growing orchids once again. If you need help in the meantime, we're at the Ace Hardware on US 1 on the first Saturday in November.



November 6 SAOS Meeting Movie and Popcorn Night

November 6 is election day and lots of folks will be focused on voting and politics. Our meeting will be over well before the election returns start coming in, so join us for Movie and Popcorn Night!

We'll watch "The Judge, the Hunter, the Thief and the Black Orchid". Orchids have captivated those who dare to get too close and have been known to turn the sane into the obsessed. This documentary takes a behind the scenes look into the world of collecting, judging, hunting, conservation and smuggling. It features some well known faces including Fred Clarke. We'll have our normal show table, raffle table and sales table provided by Fred Keefer.



September 16 Keiki Club Fall Preparations



We had a dozen familiar faces at the Keiki Club get-together talking about fall preparations, what to do during the fall in anticipation of the winter rest period. Ruben and Claudia Sauleda dropped in to share their expertise. How great to be able to ask questions one on one with a Master! Preston Kavanagh, who is unfortunately relocating to St. Pete, hosted a wine tasting enjoyed by all. Here are the highlights:

Final Growth Spurt of the Year. The welcome transition to fall is upon us, the temperatures are starting to moderate and the humidity is going down. Our orchids are responding by entering their fall growth spurt when you'll see new green root tips start to emerge. If you have any plants that need to be repotted, this is your last chance. There is still about 6 weeks of the growing season left for them to get re-established.

Expose Phals During First Cold Snap. We usually get our first cold snap around Halloween. Either leave your phals outdoors or place them next to an open window during this cool weather. Phalaenopsis require a significant day to night temperature change to initiate spikes. It usually takes a couple of weeks of these conditions to get all of the phals to put their energy into growing spikes instead of leaves. Phals will be fine exposed to the cool weather even after nights are in the upper 50s F as long as the day temperature rises above 80F. Once daytime high temperatures are below 78-80F, phals need to be kept no lower than 60F at night. Your phals will be on schedule to be spiking by Christmas and in bloom by Valentine's Day.

Clean Up your Plants. Use the delightful fall months to spend some time with your plants: clean them up, remove dead flower spikes, etc.

- *Check for Critters.* You want to make sure that you are only bringing in your plants, and not critters that abound

Continued on page 5



CLUB NEWS

Continued from page 4



in Florida. Spray them with a hose end sprayer set to flat to give them a bath and remove any spider webs, etc. Clean off leaves with lemon juice, white vinegar or Sprite to remove all that messy build up of fertilizer or minerals on the leaves.

- *Ants, Snails and Cockroaches in Pots.* You don't want to introduce ants and roaches into your porch or home for the winter. Mix up a jug of liquid Sevin and water (1 tsp/gal) and pour through all your pots to eliminate these pests.

- *Check for Sucking Insects.* Remove sheaths to reduce the number of places that insects have to hide. Watch for signs of scale and mealy bugs, any kind of white fuzzy mass. If you do find any pesky critters, you can treat small spots with rubbing alcohol or spray all the plant surfaces with an insecticide. Better yet, add 6 tsp of Bayer Tree and Shrub (1.47% imidacloprid) to your Sevin jug and pour through the potting mix. The systemic imidacloprid will be absorbed through the roots and kill scale and mealybugs from within without your having to spray.

- *Check for Fungus.* Keep an eye out for any kind of moldy looking areas. Molds may show up as dark areas usually on the lower surface of the leaf. If found, spray with Physan or pool algacide.

Temperatures. Have a plan to protect your plant during the winter months.

- *Minimum Temperatures.* Protect your phals, vandas and phalaenopsis type dendrobiums when temperatures drop to 50 to 60F and your other plants at 40 to 50F. Get projected hourly night time [low temperatures](#) for your area.

- *Temperature Differential.* Make sure that your orchids are getting some solar heat to get the day time temperature at least in the 80s. They will not grow well for you in a constant 65 to 70 degree environment. You may have to move your plants to a window with more direct sun to accomplish this. If you have installed artificial lighting to increase light, this may provide enough warmth for your plants.

Isolate those Plants that Need a Rest. Winter is a good time to group plants together that need similar winter

conditions.

- *Dendrobiums.* Group your deep winter resting dendrobiums (nobile, seminobile and Callista sections) together. Restrict all fertilizer after Thanksgiving, water sparingly and provide high light during the winter months. Keep these and similar plants together so that you will know that they need only once a month watering and no fertilizer.

- *The Catasetinae.* Catasetums, clowesias, cycnoches and mormodes as well as a few others like calanthe are dormant during the winter months. They need no water at all until the new growth starts in the spring. Find a place to group these together where you know you will not water them. Some people turn the pots on their sides to remind themselves.

Superstar Ruben Saulea took time out from his St. Aug vacation to share his growing expertise. Some of his pearls of wisdom:

- *Water!* When asked what the number one mistake hobbyists make, Ruben says they don't water enough during the growing season. He grows many cattleya in sphagnum moss and they respond well to the increased moisture, particularly *skinneri*, *deckeri*, *aurantiaca*, and *chocoensis*. If you see long roots, it means your plants aren't getting enough water and they are growing long roots in search of more moisture.

- *Snails and Slugs.* Sevin is the best treatment for snails and slugs. You can either dust with the powder form or spray with the liquid form.

- *Cockroaches.* Use Harris roach tablets if you want to get rid of cockroaches. Be careful to keep your pets away from this poison.

- *Algae.* Use pool algacide at 2 tsp/gal if 10% strength or 1 tsp/gal at 20% strength to keep algal growth at bay. You can spray the plants, pots, benches with pool algacide, but it will damage flowers so either avoid spraying the flowers or quickly wash the flower with fresh water after spraying. Vanda roots should be sprayed with pool algacide because the algae can damage the roots.



CULTIVATION



Growing Tips for October

Dr. Courtney Hackney,
hackneau@comcast.net
Dept. Biology, Univ. North
Florida

Gone are the hot days of summer, but the fall season reminds us that it is time to prepare for the coming cold season. Even those of us growing indoors need to begin planning for the changing weather if we grow under lights.



A large number of hobbyists move plants outside once spring takes hold each year, but it is now time to begin moving them back to their winter growing area. Not all orchids need to come inside right away. Phals can be left outside until night temperatures drop below 55 F as long as day temperatures are moderate. Moving phals inside before they receive a week or so where the difference between night and day temperatures are at least 15 degrees F can delay the initiation of spikes. Once spikes emerge, it is a good idea to move them inside and away from pests that love those tasty flower spikes.

Vandaceous orchids are usually considered the most cold-intolerant, but that is not universal. Neofinitia hybrids are often part of hobby collections, especially where there is limited space. They



can survive considerable cold since the natural habitat of the parent is on the cold side. Many vandas

and ascocendas with *Vanda coerulea* in the background bloom with brighter color if they are experiencing cool nights. Ideally, however, most strap-leaved vandas don't like it when day temperatures drop below 80 degrees F and nights are below 60 F.

Cattleyas are surprisingly tolerant of cool nights and flower better with brighter colors when nights are cool and days warm.

The most tolerant orchids for cold are Cymbidiums and most flower best when exposed to near frosting temperatures. Once spikes emerge, it is best to avoid extreme cold, but this group of orchids is cold tolerant. Once spikes begin to form buds there is a risk of bud blast, so move Cymbidiums into warmer areas.



Of course, there are many kinds of orchids with all sorts of requirements during this transitional season. If there are plants in your collection that do not bloom or bloom poorly, but grow well there may be special conditions you need to provide. If the non-blooming orchid is a species, there are likely books that can tell you what you need to do to get it to bloom. Hybrids are usually easier to bloom, but often require conditions similar to species in their background.

If you grow in a greenhouse it is time to check heaters and vents to be sure they are working properly. The first cold usually comes when you have the least time to get ready so do it now.

Not only are you planning for cold, but so are many of the pests that cause problems in winter. If you have your orchids outside and plan to move them in, you need to avoid bringing these pests inside too. Dipping orchids in your preferred pesticide, pot and all, is a way to get rid of pests hiding in pots. For me, large roaches are a real problem that plagues me all year long here in Florida. An old friend introduced me to a new product that seems to be working well. The product is Niban Granular Bait which has orthoboric acid as its active ingredient. So far, I have not put it in pots, but on benches alongside pots. There was no sign that it was working at first, but soon large roaches started appearing dead on the greenhouse floor. In addition, there is now little damage to new roots and flower buds. Hopefully, this will continue when the greenhouse is closed in winter.



CULTIVATION

Your Orchids in October

based on Robert Scully, Ned Nash & James Rose checklists, courtesy of the AOS



Your plants require less water and fertilizer now. Observe the rate at which your plants dry out after watering and make adjustments, gradually adding days in between your normally watering cycle.

Cattleyas. Many fall blooming cattleyas are getting ready to bloom and buds are swelling in their sheaths. *C. labiata*, *C. bowringiana* and the fall blooming form of *C. skinneri*, and their hybrids typically have double sheaths. *Sophranitis*



coccinea enjoys a peak flowering season this month. Some of its hybrids should also be blooming, particularly those with summer-fall flowering parents. While the plants are usually small, the show of color makes them conspicuous. Also blooming now is *Enc. cochleata*, *Epi. ciliare* and *Epi. pseudepidendrum*.

It seems that the big change in day to night temperatures can cause moisture to accumulate between the inner and outer sheaths causing buds to rot. Watch these orchids carefully and be sure there is lots of air movement around these orchids. If you observe any moisture accumulating, carefully open the outer sheath and allow air movement into the space between sheaths. That usually solves the problem.

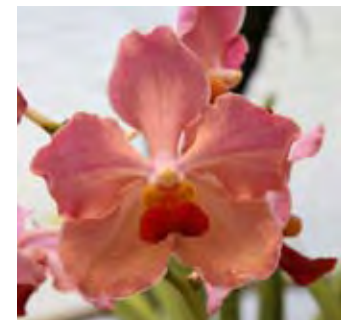
Paphiopedilums. Paphs and phrags really seem to love the cool nights too. Mature growths, especially in the multifloral paphs will prepare to flower. Usually development of new growths is the first sign that a flower spike will soon emerge.



Phalaenopsis. Phals require a significant day to night temperature change to initiate spikes. It usually takes a couple of weeks of these conditions to get phals to put their energy into growing spikes instead of leaves. Phals will be fine on a porch or in a greenhouse even after nights are in the upper 50s F as long as the day temperature rises above 80 F. Once daytime high temperatures are below 78-80 F, phals need to be kept no lower than 60 F at night.



Vandas. Autumn marks the end of the vanda growing season. Vandas are known as heat-loving orchids, but seem to bloom better in the fall and winter as long as temperatures do not get below 60 F and there is enough light. Colors are always brighter when nights are a little cooler. This is especially true for any vanda or ascocenda with *Vanda coerulea* in the parentage.



Other Genera: Catasetum Relatives. You should be seeing flowers on catasetums and their relatives now. Handle catasetums with care when the blooms are open because a minor jarring of the plant can cause the flowers to eject their pollen-carrying anther caps, resulting in a much shortened flower life. This interesting and unique method of natural pollen dissemination is always a stimulating topic of conversation for those seeing it occur for the first time.



CULTIVATION



Orchid Questions & Answers

by Sue Bottom,
sbottom15@bellsouth.net

Q1. I have two plants whose leaves each have a white patch. Can you tell me how to fix this and how to prevent it from happening?



Q1

A1. That looks like sunburn. Unless you just moved them, the angle of the sun must have changed enough that it burned the leaves. You can take a clean single edge razor blade and cut away the damaged part of the leaf. You'll have to move them so they don't get so much midday sun. Not to worry, they'll grow new leaves.



Q2



Q2. These reed stem orchids all have different flowers. I keep them moist and the leaves have grown well, though suddenly one of the plants has turned brown and soft and it is falling apart. They are potted in a dried out moss that has almost turned to dust.



Q2

A2. I don't think those are reed stem orchids, they are in the oncidium family. Some look nice and healthy, but one looks like it's suffering from rot. I'd knock that one out of the pot, cut away the soft brown tissue and repot whatever is left in a smaller pot. If the sphagnum has turned to dust, it is shot and it will retain too much water. Think about putting them in fresh sphagnum moss (always wet it before you use it for potting). The sphagnum only lasts for a year or two, after two years it is rotten and once it rots, the roots will rot and things all go down hill from there.



Q3

Continued on page 9



CULTIVATION

Continued from page 8

Q3. The rot started on the bottom of the crown that is under the potting mix and worked its way up to the center of the leaves. The leaf and adjacent root rotted. Is it a cause for concern?

A3. The main symptom of Southern blight or Collar Rot is a rapid collapse and rotting of the roots, pseudobulbs and lower parts of the leaves. Roots, pseudobulbs, leaf bases and the lower part of stems turn creamy yellow. The affected tissue becomes brown (resulting from invasion by secondary pathogens), collapses and rots very rapidly. The disease eventually girdles and destroys the entire basal portion of the plant. Affected leaves yellow, wilt and die. If caught early enough, you can treat with a systemic fungicide containing thiophanate methyl (like Cleary's 3336 or Banrot).

Q4. I have some phalaenopsis that grow well and bloom twice a year. However my cattleyas are not growing well. It looks like they are very healthy and keep growing new leaves slowly. I use fertilizer every other week. I put all my orchids in the east windows which provide plenty of sunlight. Why do I only get one bloom in 5 years?



A4. Your cattleyas need more light. An east window is perfect for phalaenopsis, but they are low light plants. Cattleyas require bright light such as from a southerly window to accumulate enough energy to put forth those beautiful flowers. Is there a place outdoors in dappled light that you can transition them to slowly so they'll get more light?

Q5. I got this phal to bloom, but the inner petals are not opening at all. Some of the older flowers have wilted and fallen off the spike. Have you come across phals like this one where there are only half opened blooms?



A5. I think that is a peloric phalaenopsis, where the petals mimic the lip. It's genetic and the plant will always bloom that way. Some people love them thinking them attractive and some people hate them thinking they are deformed. All that matters is whether or not you like it.

Ace Repotting Plant Clinic

The first Saturday of the month from March through November, SAOS members are available to talk with you, answer questions and help you repot orchids.

Ace Hardware, 3050 US 1 South, St. Aug,
9 am until 1 pm.



CULTIVATION

Thrips on Orchids

Sue Bottom, sbottom15@bellsouth.net



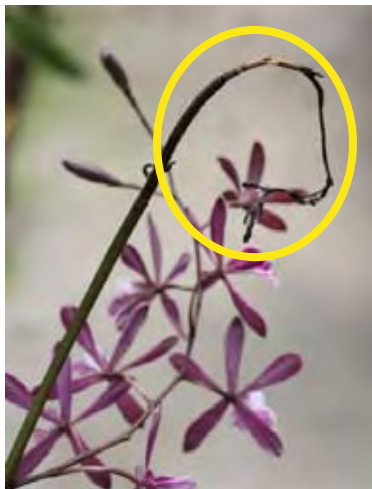
Thrips destroying cattleya flower

I used to laugh when people talked about thrips, saying I don't get thrips. Well, ignorance is bliss. I simply couldn't see the thrips and didn't recognize the thrip damage. Thrips are tiny, slender, winged insects that are usually dark brown or black but can be yellowish white. This badly damaged cattleya flower has at least eight thrips crawling on it causing the ugly stippling and browned edges on the flower.

Detection. If you suspect thrips, you can gently shake a flower over a piece of white paper. The thrip will be a very narrow dark speck about 1/8 inch long moving around on the paper. Some growers hang yellow sticky cards to monitor for flying insects, though I stopped using them after finding dead chameleons trapped on the strips. Whether or not you can see the thrip, you can easily recognize the trail of carnage they leave behind.

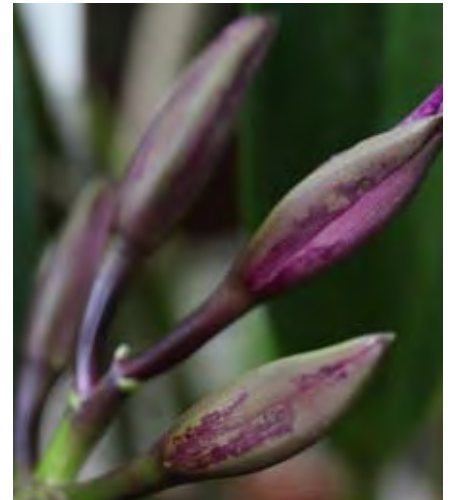
Thrip Damage. Thrips are very small sucking insects that feed on the most tender parts of your orchids: flowers, flower buds, new leaves on thin leaved orchids, root tips, etc.

Bud Blast on Emerging Inflorescences. Thrips destroyed the tip of the emerging inflorescence on the encyclia to the right. The cynoches to



the left developed one normal inflorescence to the left, but the second one to the right was ruined by thrips. The thrips damage the inflorescence when they break through the cell walls and suck the juices causing the flowers to abort.

Thrip Damage on Flower Buds. Thrips feasted on these emerging cattleya flower buds. Infested buds may or may not open. Their piercing mouth parts sucked the juices from this flower so it is ruined long before it even opens.



Flower Damage. Flowers may be deformed exhibiting stippling, browned edges and water soaked spots. Flowers may appear to have virus caused color break that is really caused by thrip damage.



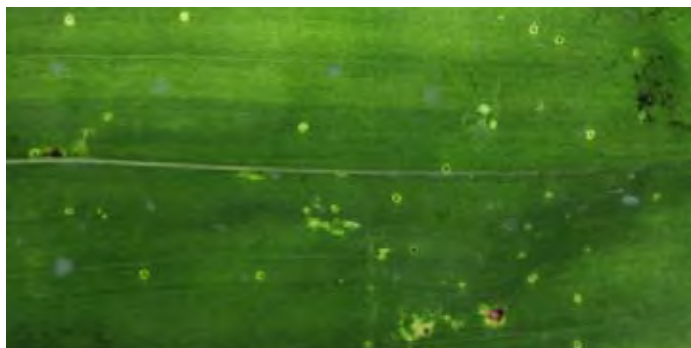
Continued on page 11



CULTIVATION

Continued from page 10

Leaf Damage. Some thrips feed on the undersides of leaves, particularly on thin leaved orchids like this catasetum. Leaves may appear pitted, stippled, silvery or bleached. The initial damage appears as a small chlorotic spot, but with time a bull's eye will appear inside the chlorotic spot indicating the location where thrips sucked the juices from the plant. Small brownish specks of excrement may be visible on the undersides of leaves.



Thrips damage on thin catasetum leaf

Root Damage. Thrips love tender new roots like these exposed vanda roots. Roots can be girdled from thrips feeding on the growing root tips.



Control. Thrips are the most difficult to control of all the orchid pests. Both the larvae and adults are very active and feed on leaves and flowers. The mature larvae drop onto the bench, underbench or growing medium to pupate. The thrip life cycle (egg to adult) is primarily dependent on temperature. In warm greenhouses thrips may develop from egg to adult in 10 to 14 days, and they can be active throughout the year.

Managing thrips is difficult because they are very small and easy to overlook; they are mobile, spend part of their life cycle in the soil; prefer to feed on flower parts, where systemic insecticides do not reach them; like to hide in flowers, flower buds, and leaf buds making them hard to spot and reach with pesticides; live on a wide variety of host plants; reproduce rapidly in warm greenhouses; hide in plant materials and are resistant to a number of insecticides. Most adult thrips are females that lay eggs into plant tissue, particularly leaves.

Commercial orchid growers have offered these suggestions:

Identify Sources. Identify the source of thrips in your landscape and spray the source plants to prevent the spread of thrips. Thrips are particularly attracted to gardenias, citrus, roses, vegetables and flowering plants.

Spray Buds and Flowers. Spray the emerging buds and flowers every three days using a hand pump sprayer and an insecticide that won't mar the flower (like Orthene, Conserve or Avid).

Spray Underbenches. In the spring and fall, spray under benches and around your growing area using a strong insecticide to kill any thrips that are pupating in the ground.



Rotate Insecticides. Apply insecticides with different modes of action. Some rotate Avid, Decathlon and Overture, others spray with Conserve to kill thrips in the flowers and then an Imidacloprid product for more residual action. The OHP Thrips Cocktail contains more insecticide rotation guidelines.



MY FAVORITE ORCHID

My Favorite Orchid

by [Mike Heinz](#), mgheinz@comcast.net

When I was asked to do this article I had several ideas as how to answer the question. The first answer might have been “my first orchid” which I believe was *C. Bow Bells*.



C. Bow Bells

My second idea was “the last orchid I bought”, which was a paphiopedilum Kaycee admired (and as any smart grower knows, when your spouse admires a plant, you buy it). Now if I get specific, and list genera, then I have a bunch of choices. My favorite cattleya is *C. walkeriana*, my favorite coelogyne is *Coel. cristata* and my favorite paphiopedilum is *Paph. sanderianum*.



Coel. cristata

I could go on this way for a long time, and never pin myself down, so I'll just go right to what I believe is my favorite orchid. Those that know me know that bulbophyllums are my favorite genus, and *Bulb. phalaenopsis* has to be my favorite Bulbo.

I find this plant fascinating because it has two ways of attracting its pollinator. The first way is by sight. The blooms resemble a piece of rotting meat, with maggots crawling out of the meat, which is just too much temptation for a fly to resist. Then when the fly touches the cilia on the flower,



Bulb. phalaenopsis

which resemble maggots, an overpowering stench of rotting meat is released. This is one of the only plants I know of that uses two means of attracting pollinators to itself. The smell is probably why Kaycee refers to my Bulbos as “Little Boy Plants”, because only a little boy could love something that smells so bad.



Bulb. phalaenopsis

I hope this gives you the idea that you are the only one who has to understand why you love one plant over all others, and that your reasons don't have to be the workings of a logical mind.



SHOW TABLE



Terry Bottom

Grower Sue Bottom
Ctism. pileatum 'Green Jade' x sib



Terry Bottom

Grower Dick Roth
V. Pat Delight



Terry Bottom

Grower Courtney Hackney
V. cristata x Phal. philippinensis



Terry Bottom

Grower Sue Bottom
Cycd. Wine Delight



Terry Bottom

Grower Mike & Kaycee Heinz
Bulb. mastersianum



Terry Bottom

Grower Bob & Yvonne Schimmel
V. Somsri Blue Classic



Terry Bottom

Grower Dick Roth
V. sanderiana



SHOW TABLE



Grower Mike & Kaycee Heinz
Ddc. magnum 'Cagyanence'



Grower Helen Hoffman
Ang. distichum



Grower Courtney Hackney
Blc. Lake Murray



Grower Harry & Celia McElroy
Cym. Golden Vanguard



Grower Sue Bottom
Cyc. chlorichilon



Grower Courtney Hackney
Blc. George King x Blc. Malworth

